

WASTEWATER SYSTEM PLANNING AND IMPROVEMENTS

- THE MAJORITY OF PATEROS'S SEWER SYSTEM IS NEARLY 65 YEARS OLD. MANY OF THE SEWER MAINS ARE CONSTRUCTED OF ASBESTOS CEMENT (AC) OR CONCRETE AND SIT BELOW THE NORMAL POOL ELEVATION OF WELLS DAM. VARIOUS COLLECTION SYSTEM LINING AND REPLACEMENTS ARE NEEDED, AS WELL AS UPGRADES TO THE CITY'S WARREN AVE. LIFT STATION.
- THE CITY'S WASTEWATER TREATMENT PLANT WAS LAST UPGRADED 23 YEARS AGO. THE TREATMENT SYSTEM NEEDS VARIOUS MAINTENANCE UPGRADES; SOME TREATMENT COMPONENTS ARE PAST THE EQUIPMENT SERVICE LIFE AND NEED TO BE REPLACED.
- A COMPREHENSIVE FACILITY PLANNING EVALUATION FUNDED BY THE DEPARTMENT OF ECOLOGY IS UNDERWAY.
- SUMMARY OF NEEDED WASTEWATER IMPROVEMENTS INCLUDE:
 - SEWER COLLECTION SYSTEM (\$4.49 MILLION)**
 - T-MAIN REPLACEMENTS
 - MISC. COLLECTION SYSTEM LINING AND REPAIRS (SPECIFICALLY IN THE HIGH I/I AREAS)
 - WARREN AVE. LIFT STATION IMPROVEMENTS
 - TREATMENT PLANT UPGRADES (\$8.52 MILLION)**
 - INFLUENT LIFT STATION UPGRADE
 - HEADWORKS SCREEN REPLACEMENT
 - SECONDARY TREATMENT SYSTEM UPGRADE
 - DEWATERING SYSTEM UPGRADE (SCREW PRESS DEWATERING SYSTEM)
 - MISC. REFURBISHMENTS AND SITE/TREATMENT IMPROVEMENT
- THE CITY IS WORKING WITH OUR ENGINEERS AND FUNDERS ON PRIORITIZATION/PHASING AND OBTAINING FUNDING FOR THE NEEDED IMPROVEMENTS.

No.	RECOMMENDED COLLECTION SYSTEM IMPROVEMENTS TO REDUCE I/I
1	LINE MAINS & MANHOLES

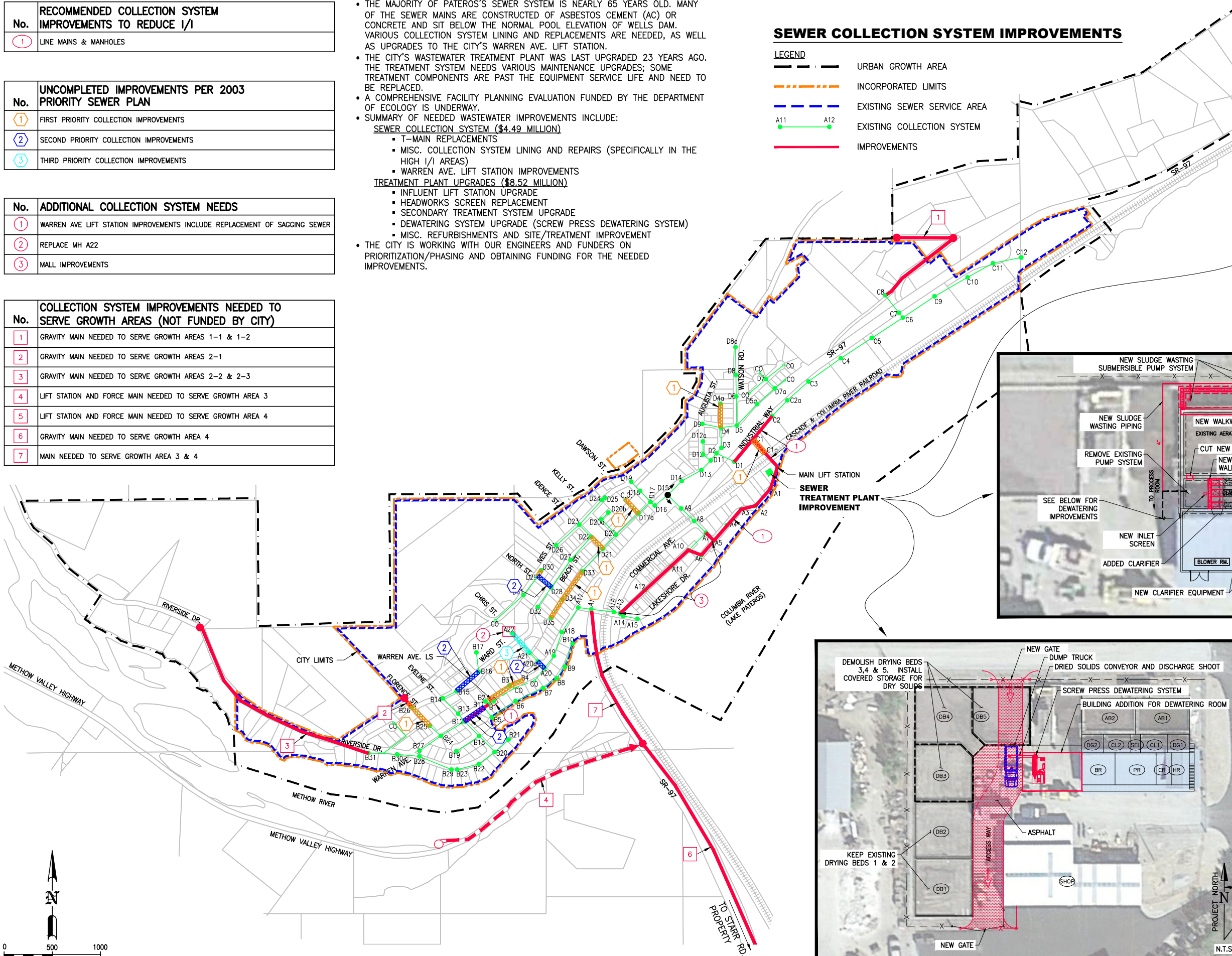
No.	UNCOMPLETED IMPROVEMENTS PER 2003 PRIORITY SEWER PLAN
1	FIRST PRIORITY COLLECTION IMPROVEMENTS
2	SECOND PRIORITY COLLECTION IMPROVEMENTS
3	THIRD PRIORITY COLLECTION IMPROVEMENTS

No.	ADDITIONAL COLLECTION SYSTEM NEEDS
1	WARREN AVE LIFT STATION IMPROVEMENTS INCLUDE REPLACEMENT OF SAGGING SEWER
2	REPLACE MH A22
3	MALL IMPROVEMENTS

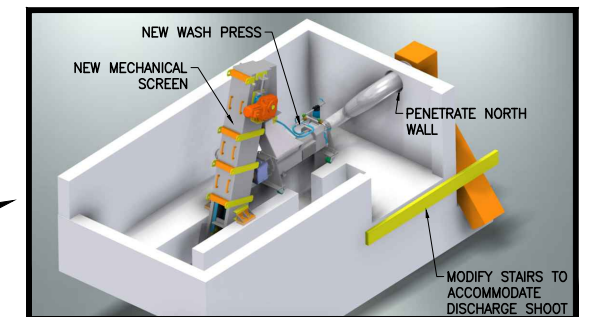
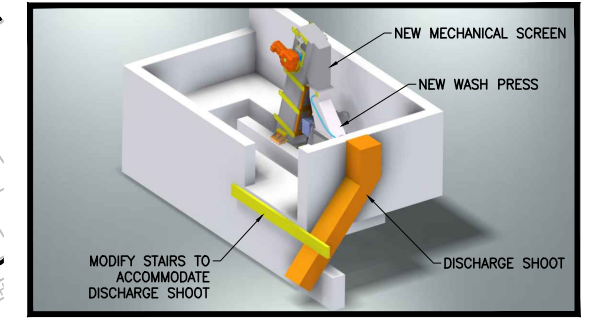
No.	COLLECTION SYSTEM IMPROVEMENTS NEEDED TO SERVE GROWTH AREAS (NOT FUNDED BY CITY)
1	GRAVITY MAIN NEEDED TO SERVE GROWTH AREAS 1-1 & 1-2
2	GRAVITY MAIN NEEDED TO SERVE GROWTH AREAS 2-1
3	GRAVITY MAIN NEEDED TO SERVE GROWTH AREAS 2-2 & 2-3
4	LIFT STATION AND FORCE MAIN NEEDED TO SERVE GROWTH AREA 3
5	LIFT STATION AND FORCE MAIN NEEDED TO SERVE GROWTH AREA 4
6	GRAVITY MAIN NEEDED TO SERVE GROWTH AREA 4
7	MAIN NEEDED TO SERVE GROWTH AREA 3 & 4

SEWER COLLECTION SYSTEM IMPROVEMENTS

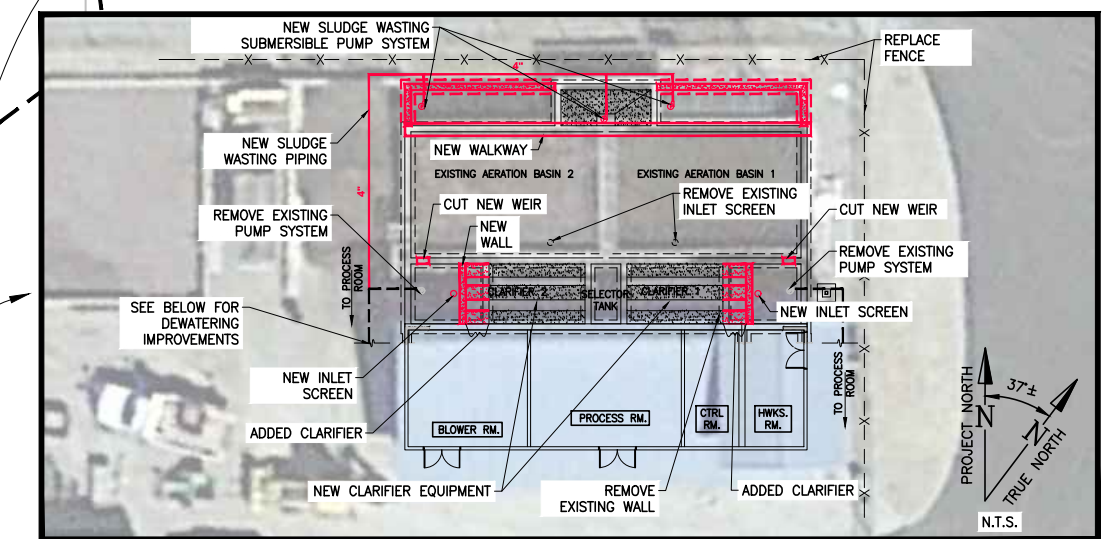
- LEGEND**
- URBAN GROWTH AREA
 - INCORPORATED LIMITS
 - EXISTING SEWER SERVICE AREA
 - EXISTING COLLECTION SYSTEM
 - IMPROVEMENTS



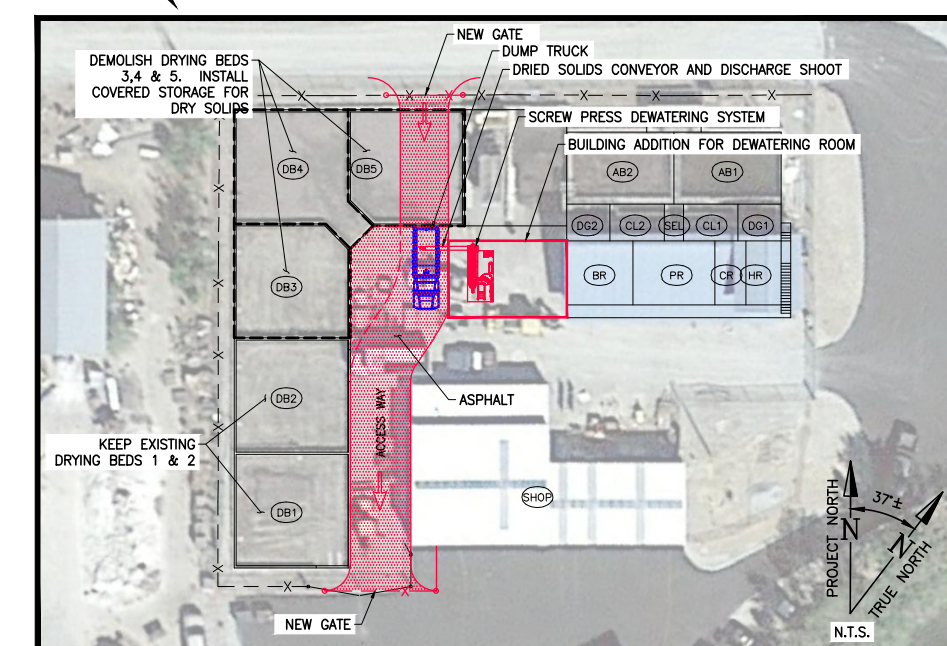
WASTEWATER TREATMENT PLANT UPGRADES



HEADWORKS: REPLACE SCREEN AND ADD WASH PRESS



SECONDARY TREATMENT SYSTEM IMPROVEMENTS



DEWATERING SYSTEM IMPROVEMENTS